

PROJECT NO.	SHEET NO.	TOTAL NO.
2019CPT.11.07.10051, 2019cpt.11.07.2		

SUMMARY OF QUANTITIES

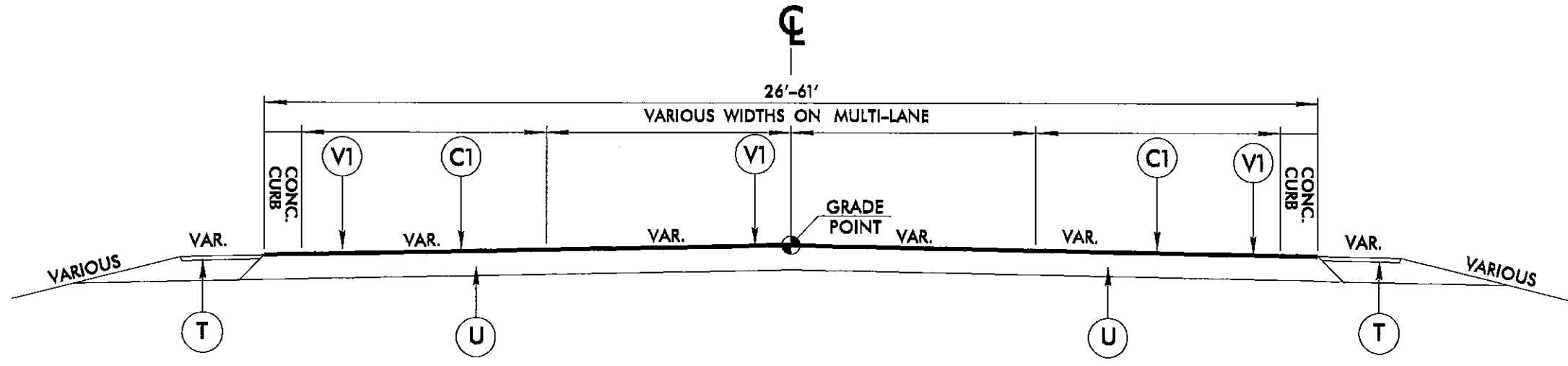
PROJECT NO	COUNTY	MAP NO	ROUTE	DESCRIPTION	TYP NO	LANES	LANE TYPE	FINAL SURFACE TESTING REQUIRED	WARM MIX ASPHALT REQUIRED	LENGTH	WIDTH	0106000000-E	1220000000-E	1245000000-E	1297000000-E	1330000000-E	1519000000-E	2830000000-N	2845000000-N	5255000000-N	6084000000-E	7444000000-E	7456000000-E	
												BORROW	INCIDENTAL STONE BASE	SHOULDER RECONSTRUCTION	1 1/2" MILLING	INCIDENTAL MILLING	SURFACE COURSE, 59.58	ADJ. OF MANHOLES	ADJ. OF METER OR VALVE BOX	PORTABLE LIGHTING	SEED & MULCHING	INDUCTIVE LOOP	LEAD-IN CABLE	
											MI	FT	CY	TONS	SMI	SY	SY	TONS	EA	EA	EA	AC	LF	LF
2019CPT.11.07.10051	Ashe	1	US 221 BUSINESS	FROM US 221 TO US 194	1	4	MU	NO	NO	1.74	61	80			0.40	60,000		1,526	15	5	1.00	0.14	400	25
2019CPT.11.07.10051	Ashe	2	NC 88	FROM SR 1387 (DR. ROBINSON ROAD) TO SR 1340 (WEST MILL CREEK ROAD)	2	2	2WU	NO	NO	6.93	20	2,772	15	13.86	700	150	6,750					5.00		
2019CPT.11.07.10051	Ashe	3	NC 88	FROM NC 16 TO ONE MILE EAST OF SR 1590 (WAGONER ACCESS ROAD)	2	2	2WU	NO	NO	2.41	18	964	50	4.82		150	2,139					1.70		
2019CPT.11.07.10051	Ashe	4	NC 194	FROM US 221 BUSINESS TO 7TH STREET	1	2	2WU	NO	NO	0.34	26				5,186		445	11	4					
2019CPT.11.07.10051	Ashe	5	NC 194	FROM 7TH STREET TO NC 88	2	2	2WU	NO	NO	1.15	26	460	17	2.30		72	1,582					0.83		
TOTAL FOR PROJ NO. 2019CPT.11.07.10051											12.57		4,276	82	21.38	65,886	372	12,442	26	9	1.00	7.67	400	25
2019cpt.11.07.20051	Ashe	6	SR 1100 (CRANBERRY SPRINGS ROAD)	FROM SR 1102 (BROWNWOOD ROAD) TO SR 1106 (RAILROAD GRADE ROAD)	2	2	2WU	NO	NO	0.59	16	236	50	1.18		267	460					0.42		
2019cpt.11.07.20051	Ashe	7	SR 1100 (THREE TOP ROAD)	FROM BRIDGE OVER LONG HOPE CREEK TO NC 88	2	2	2WU	NO	NO	2.01	18	804	60	4.02		450	1,813					1.46		
2019cpt.11.07.20051	Ashe	8	SR 1131 (BUFFALO ROAD)	FROM SR 1193 (LEWIS ROAD) TO NC 88	2	2	2WU	NO	NO	1.24	18		25	2.48		150	1,123					0.90		
2019cpt.11.07.20051	Ashe	9	SR 1147 (NETTLE KNOB ROAD)	FROM SR 1181 (LOWER NETTLE KNOB ROAD) TO SR 1258 (CHERRY AVENUE)	2	2	2WU	NO	NO	1.57	18	625	50	3.14		600	1,427					1.14		
2019cpt.11.07.20051	Ashe	10	SR 1147 (NETTLE KNOB ROAD)	FROM SR 1258 (CHERRY AVENUE) TO US 221	2	2	2WU	NO	NO	1.51	18	302	15	3.02		50	1,360					1.09		
2019cpt.11.07.20051	Ashe	11	SR 1155 (FRANK DILLARD ROAD)	FROM NC 16 TO NC 163	2	2	2WU	NO	NO	2.95	20	1,180	40	5.90		111	2,933					2.15		
2019cpt.11.07.20051	Ashe	12	SR 1159 (BOGGS ROAD)	FROM NC 163 TO BEGIN 20' PAVEMENT	2	2	2WU	NO	NO	2	18	1	15	4.00		120	1,785					1.45		
2019cpt.11.07.20051	Ashe	13	SR 1214 (WEST RAINBOW ROAD)	FROM SR 1137 (BUCK MOUNTAIN CIRCLE) TO SR 1215 (RAINBOW ROAD)	3	2	2WU	NO	NO	0.08	16	32	5	0.16			62					0.05		
2019cpt.11.07.20051	Ashe	14	SR 1215 (RAINBOW ROAD)	FROM SR 1214 (WEST RAINBOW ROAD) TO DEAD END	3	2	2WU	NO	NO	0.1	16	40	5	0.20			78					0.07		
2019cpt.11.07.20051	Ashe	15	SR 1234 (SAINT MARYS DRIVE)	FROM SR 1248 (BEAVER CREEK SCHOOL ROAD) TO SR 1235 (ED MESSER ROAD)	3	2	2WU	NO	NO	0.07	20	28	5	0.14			68					0.05		
2019cpt.11.07.20051	Ashe	16	SR 1235 (ED MESSER ROAD)	FROM SR 1234 (SAINT MARYS DRIVE) TO SR 1236 (HARDIN LANE)	3	2	2WU	NO	NO	0.1	20	40	5	0.20			97					0.07		
2019cpt.11.07.20051	Ashe	17	SR 1236 (HARDIN LANE)	FROM SR 1235 (ED MESSER ROAD) TO SR 1237 (PARKER DRIVE)	3	2	2WU	NO	NO	0.06	20	24	5	0.12			58	1				0.04		
2019cpt.11.07.20051	Ashe	18	SR 1237 (PARKER DRIVE)	FROM SR 1236 (HARDIN LANE) TO SR 1238 (JEROME STREET)	3	2	2WU	NO	NO	0.06	20	24	5	0.12			58					0.04		
2019cpt.11.07.20051	Ashe	19	SR 1238 (JEROME STREET)	FROM SR 1237 (PARKER DRIVE) TO END OF MAINTENANCE	3	2	2WU	NO	NO	0.05	20	20	5	0.10			49					0.03		
2019cpt.11.07.20051	Ashe	20	SR 1248 (BEAVER CREEK SCHOOL ROAD)	FROM NC 194 TO US 221 BUSINESS	2	2		NO	NO	4.2	20	1,680	100	8.40		222	4,197					3.00		
2019cpt.11.07.20051	Ashe	21	SR 1251 (CANDLE LIGHT DRIVE)	FROM SR 1149 (MOUNT JEFFERSON ROAD) TO SR 1269 (BRANDIWOOD EST.)	3	2	2WU	NO	NO	0.39	18	156	10	0.78		100	342					0.28		
2019cpt.11.07.20051	Ashe	22	SR 1260 (JOE LYALLS ROAD)	FROM SR 1137 (BUCK MOUNTAIN CIRCLE) TO END OF MAINTENANCE	3	2	2WU	NO	NO	0.18	16	72	5	0.36		44	140					0.13		
2019cpt.11.07.20051	Ashe	23	SR 1269 (BRANDIWOOD EST.)	FROM SR 1251 (CANDLELIGHT DRIVE) TO END OF MAINTENANCE	3	2	2WU	NO	NO	0.12	18	48	5	0.24			105					0.08		
2019cpt.11.07.20051	Ashe	24	SR 1275 (CALL CREEK ROAD)	FROM SR 1111 (BIG FLATTS CHURCH ROAD) TO END OF MAINTENANCE	3	2	2WU	NO	NO	0.57	18	228	10	1.14			500					0.41		
2019cpt.11.07.20051	Ashe	25	SR 1279 (VANNOY DRIVE)	FROM SR 1149 (MOUNT JEFFERSON ROAD) TO END OF MAINTENANCE	3	2	2WU	NO	NO	0.29	18	116	5	0.58		100	254					0.20		
2019cpt.11.07.20051	Ashe	26	SR 1516 (PINEY CREEK ROAD)	FROM SR 1500 (BART HURLEY ROAD) TO SR 1517 (PINEY CREEK ROAD)	2	2	2WU	NO	NO	0.64	18	256	30	1.28		200	618					0.47		
2019cpt.11.07.20051	Ashe	27	SR 1517 (PINEY CREEK ROAD)	FROM SR 1516 (BIG PINEY CREEK) TO US 194	2	2	2WU	NO	NO	1.61	18	644	60	3.22		150	1,412					1.17		
TOTAL FOR PROJ NO. 2019cpt.11.07.20051											20.39		6,556	515	40.78		2,564	18,939	1	9	1.00	14.70	400	25
GRAND TOTAL											32.96		10,832	597	62.16	65,886	2,936	31,381	27	9	1.00	22.37	400	25

PROJECT NO.	SHEET NO.	TOTAL NO.
PT.11.07.10051, 2019cpt.11.07		

THERMOPLASTIC AND PAINT QUANTITIES

PROJECT NO	COUNTY	MAP NO	ROUTE	DESCRIPTION	TYP NO	LANES	LANE TYPE	440000000-E		445700000-N	481000000-E		482000000-E		482500000-E	483500000-E	484500000-N					490500000-N			
								STATIONARY WORK ZONE SIGN	TEMPORARY TRAFFIC CONTROL	4" WHITE PAINT	4" YELLOW PAINT	8" WHITE PAINT	8" YELLOW PAINT	12" WHITE PAINT	24" WHITE PAINT	PAINT RT ARROW	PAINT STR ARROW	PAINT LT ARROW	PAINT STR & LT ARROW	PAINT STR & RT ARROW	GENERIC MISC. ITEM-HANDICAP SYMBOL	PAINT LT STR RT ARROW	SNOW PLOWABLE MARKERS		
								MI	FT	SF	LS	LF	LF	LF	LF	EA	EA	EA	EA	EA	EA	EA			
2019CPT.11.07.10051	Ashe	1	US 221 BUSINESS	FROM US 221 TO US 194	1	4	MU	1.74	61	270	1.00	11,180	36,748	1,280	1,500	440	120	2	6	1	1	1	2.00	350	
2019CPT.11.07.10051	Ashe	2	NC 88	FROM SR 1387 (DR. ROBINSON ROAD) TO SR 1340 (WEST MILL CREEK ROAD)	2	2	2WU	6.93	20	1,570		147,000	147,000											457	
2019CPT.11.07.10051	Ashe	3	NC 88	FROM NC 16 TO ONE MILE EAST OF SR 1590 (WAGONER ACCESS ROAD)	2	2	2WU	2.41	18	318		51,863	50,899											159	
2019CPT.11.07.10051	Ashe	4	NC 194	FROM US 221 BUSINESS TO 7TH STREET	1	2	2WU	0.34	26	307		7,317	7,317			26							1	28	
2019CPT.11.07.10051	Ashe	5	NC 194	FROM 7TH STREET TO NC 88	2	2	2WU	1.15	26			24,748	24,748											76	
TOTAL FOR PROJ NO. 2019CPT.11.07.10051								12.57		2,465	1	242,108	266,712	1,280	1,500	440	146	2	6	1	1	1	2	1	1,070
												508,820		2,780						14					
2019cpt.11.07.20051	Ashe	6	SR 1100 (CRANBERRY SPRINGS ROAD)	FROM SR 1102 (BROWNWOOD ROAD) TO SR 1106 (RAILROAD GRADE ROAD)	2	2	2WU	0.59	16	163		12,697	12,697												
2019cpt.11.07.20051	Ashe	7	SR 1100 (THREE TOP ROAD)	FROM BRIDGE OVER LONG HOPE CREEK TO NC 88	2	2	2WU	2.01	18	334		43,255	43,255												
2019cpt.11.07.20051	Ashe	8	SR 1131 (BUFFALO ROAD)	FROM SR 1193 (LEWIS ROAD) TO NC 88	2	2	2WU	1.24	18	307		26,685	26,685											82	
2019cpt.11.07.20051	Ashe	9	SR 1147 (NETTLE KNOB ROAD)	FROM SR 1181 (LOWER NETTLE KNOB ROAD) TO SR 1258 (CHERRY AVENUE)	2	2	2WU	1.57	18	203		33,786	33,786												
2019cpt.11.07.20051	Ashe	10	SR 1147 (NETTLE KNOB ROAD)	FROM SR 1258 (CHERRY AVENUE) TO US 221	2	2	2WU	1.51	18	123		32,495	32,495			10									
2019cpt.11.07.20051	Ashe	11	SR 1155 (FRANK DILLARD ROAD)	FROM NC 16 TO NC 163	2	2	2WU	2.95	20	518		63,484	63,484											195	
2019cpt.11.07.20051	Ashe	12	SR 1159 (BOGGS ROAD)	FROM NC 163 TO BEGIN 20' PAVEMENT	2	2	2WU	2	18	190		43,040	43,040												
2019cpt.11.07.20051	Ashe	13	SR 1214 (WEST RAINBOW ROAD)	FROM SR 1137 (BUCK MOUNTAIN CIRCLE) TO SR 1215 (RAINBOW ROAD)	3	2	2WU	0.08	16	56															
2019cpt.11.07.20051	Ashe	14	SR 1215 (RAINBOW ROAD)	FROM SR 1214 (WEST RAINBOW ROAD) TO DEAD END	3	2	2WU	0.1	16	56															
2019cpt.11.07.20051	Ashe	15	SR 1234 (SAINT MARYS DRIVE)	FROM SR 1248 (BEAVER CREEK SCHOOL ROAD) TO SR 1235 (ED MESSER ROAD)	3	2	2WU	0.07	20	24															
2019cpt.11.07.20051	Ashe	16	SR 1235 (ED MESSER ROAD)	FROM SR 1234 (SAINT MARYS DRIVE) TO SR 1236 (HARDIN LANE)	3	2	2WU	0.1	20	22															
2019cpt.11.07.20051	Ashe	17	SR 1236 (HARDIN LANE)	FROM SR1235 (ED MESSER ROAD) TO SR 1237 (PARKER DRIVE)	3	2	2WU	0.06	20	22															
2019cpt.11.07.20051	Ashe	18	SR 1237 (PARKER DRIVE)	FROM SR 1236 (HARDIN LANE) TO SR 1238 (JEROME STREET)	3	2	2WU	0.06	20	22															
2019cpt.11.07.20051	Ashe	19	SR 1238 (JEROME STREET)	FROM SR 1237 (PARKER DRIVE) TO END OF MAINTENANCE	3	2	2WU	0.05	20	22															
2019cpt.11.07.20051	Ashe	20	SR 1248 (BEAVER CREEK SCHOOL ROAD)	FROM NC 194 TO US 221 BUSINESS	2	2		4.2	20	886		90,384	90,384		30		40	3		6		2		277	
2019cpt.11.07.20051	Ashe	21	SR 1251 (CANDLE LIGHT DRIVE)	FROM SR 1149 (MOUNT JEFFERSON ROAD) TO SR 1269 (BRANDIWOOD EST.)	3	2	2WU	0.39	18	56															
2019cpt.11.07.20051	Ashe	22	SR 1260 (JOE LYALLS ROAD)	FROM SR 1137 (BUCK MOUNTAIN CIRCLE) TO END OF MAINTENANCE	3	2	2WU	0.18	16	96															
2019cpt.11.07.20051	Ashe	23	SR 1269 (BRANDIWOOD EST.)	FROM SR 1251 (CANDLELIGHT DRIVE) TO END OF MAINTENANCE	3	2	2WU	0.12	18	56															
2019cpt.11.07.20051	Ashe	24	SR 1275 (CALL CREEK ROAD)	FROM SR 1111 (BIG FLATTS CHURCH ROAD) TO END OF MAINTENANCE	3	2	2WU	0.57	18	96															
2019cpt.11.07.20051	Ashe	25	SR 1279 (VANNY DRIVE)	FROM SR 1149 (MOUNT JEFFERSON ROAD) TO END OF MAINTENANCE	3	2	2WU	0.29	18	96															
2019cpt.11.07.20051	Ashe	26	SR 1516 (PINEY CREEK ROAD)	FROM SR 1500 (BART HURLEY ROAD) TO SR 1517 (PINEY CREEK ROAD)	2	2	2WU	0.64	18	159		13,773	13,773												
2019cpt.11.07.20051	Ashe	27	SR 1517 (PINEY CREEK ROAD)	FROM SR 1516 (BIG PINEY CREEK) TO US 194	2	2	2WU	1.61	18	159		34,647	34,647												
TOTAL FOR PROJ NO. 2019cpt.11.07.20051								20.39		3,666		394,246	394,246	30		50	3	6	11	2				554	
												788,492		30				11							
GRAND TOTAL								32.96		6,131	1	636,354	660,958	1,280	1,530	440	196	5	6	7	1	3	2	1	1,624
												1,297,312		2,810				25							

TYPICALS AND PAVEMENT SCHEDULES

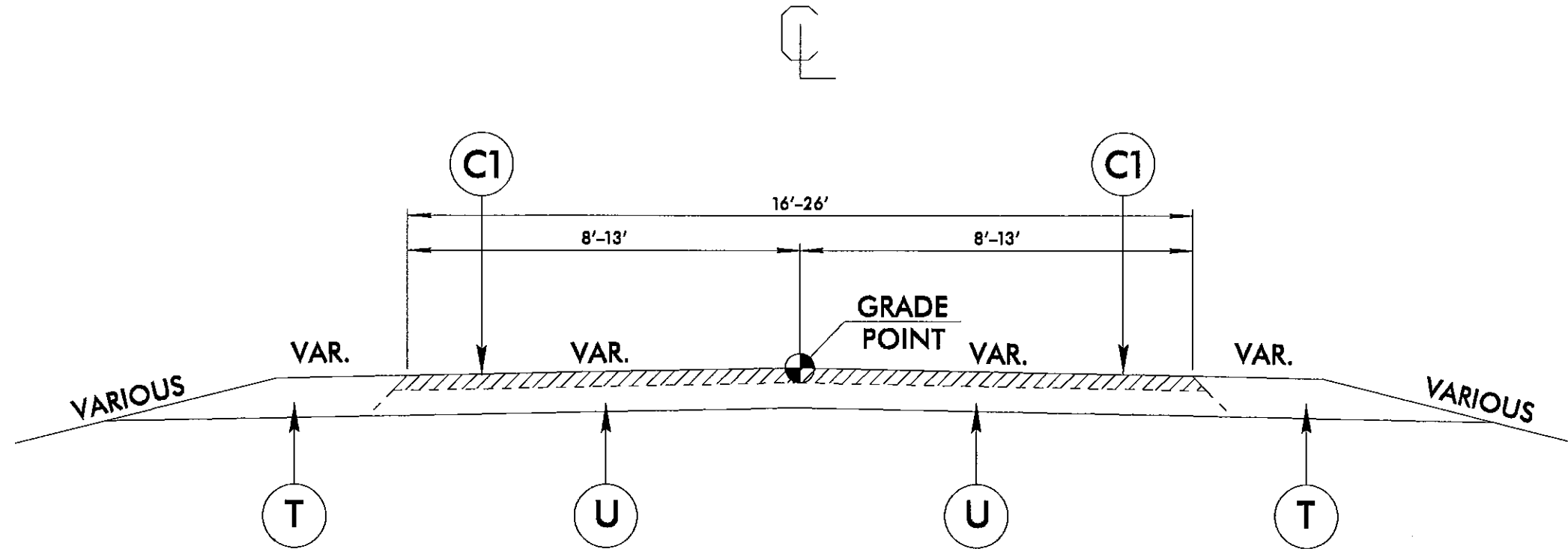


TYPICAL SECTION NO. 1

FOR MAP # 1 AND # 4

PAVEMENT SCHEDULE	
C1	PROP. APPROX. 1.5" ASPHALT CONCRETE SURFACE COURSE, TYPE S9.5B, AT AN AVERAGE RATE OF 168 LBS. PER SQ. YD.
T	PROPOSED SHOULDER MATERIAL
U	EXISTING PAVEMENT
V1	MILLING OF EXISTING ASPHALT PAVEMENT AT DEPTH OF 1.5"

TYPICALS AND PAVEMENT SCHEDULES

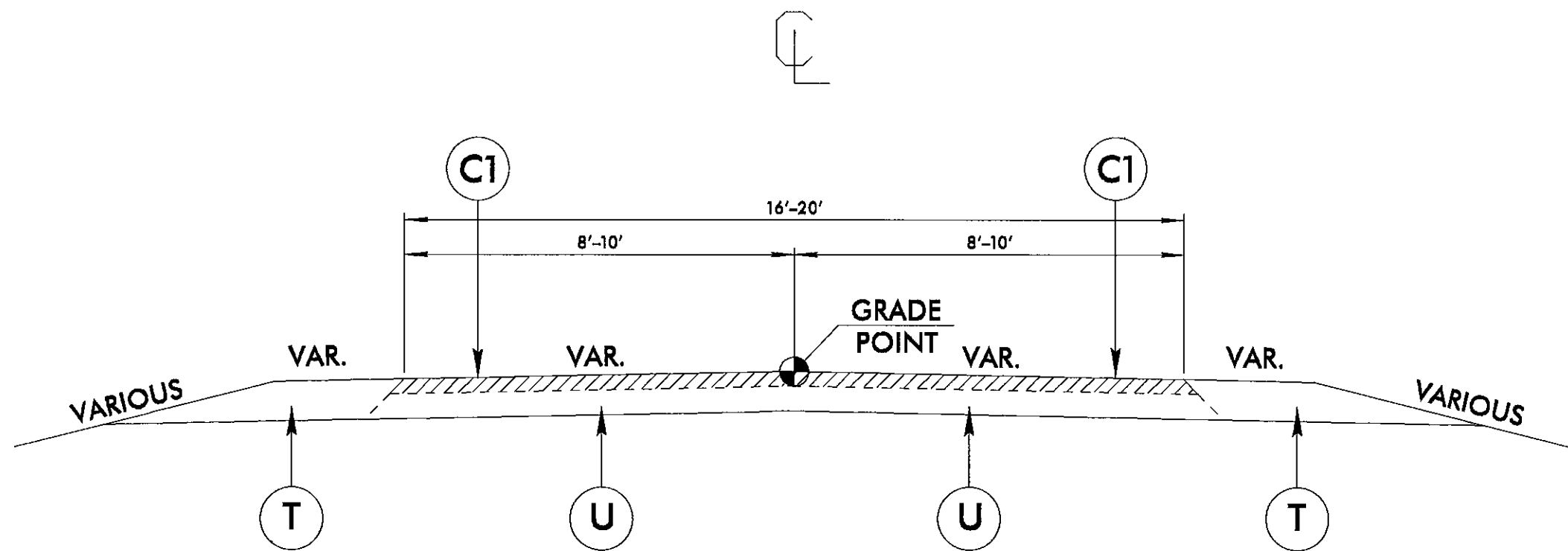


TYPICAL SECTION NO. 2

FOR MAPS # 2, 3, 5-12, 20-24, 26 AND 27

C1	PROP. APPROX. 1½" ASPHALT CONCRETE SURFACE COURSE, TYPE SF9.5B, AT AN AVERAGE RATE OF 168 LBS. PER SQ. YD.
U	EXISTING PAVEMENT
T	PROPOSED SHOULDER MATERIAL

TYPICALS AND PAVEMENT SCHEDULES



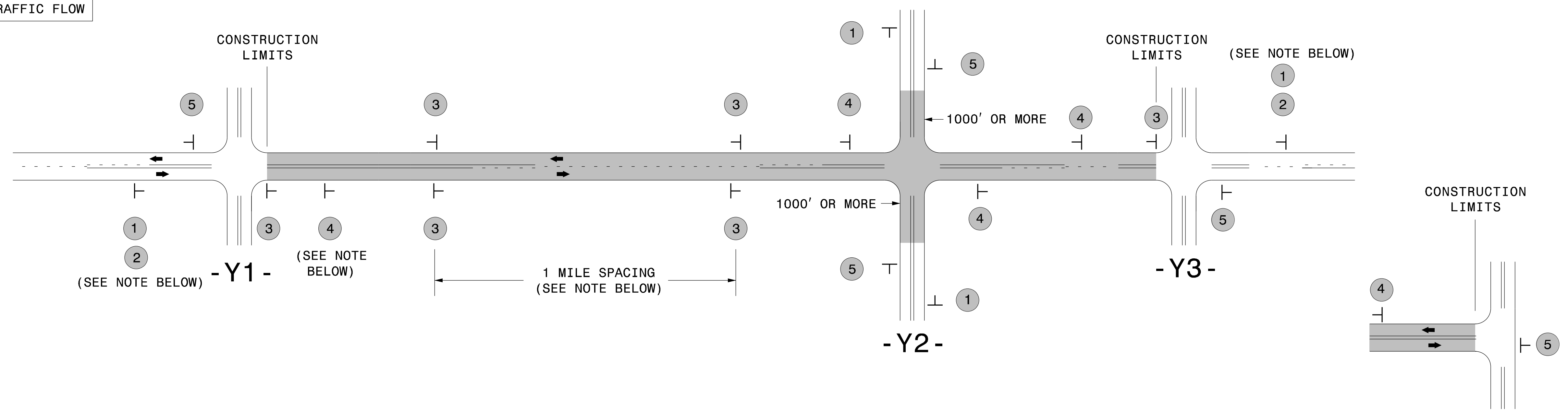
TYPICAL SECTION NO. 3

FOR MAPS # 13 THROUGH #19 AND #25

C1	PROP. APPROX. 1½" ASPHALT CONCRETE SURFACE COURSE, TYPE SF9.5B, AT AN AVERAGE RATE OF 168 LBS. PER SQ. YD.
U	EXISTING PAVEMENT
T	PROPOSED EARTH SHOULDER MATERIAL (NO ASB)

SIGNING FOR RESURFACING PROJECTS

LEGEND
 ┆ STATIONARY SIGN
 ← DIRECTION OF TRAFFIC FLOW



MAINLINE (-L-) SIGNING

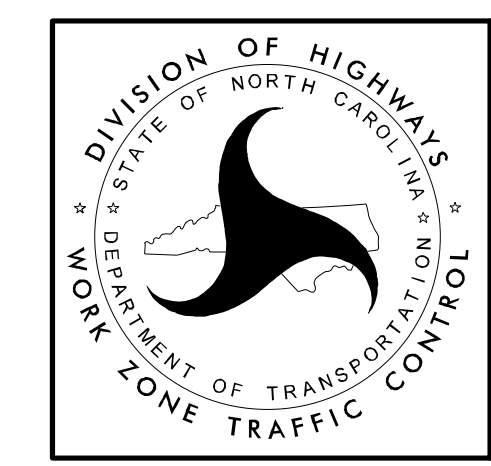
-Y- LINE SIGNING

SIGNING NOTES AND PLACEMENT PER DIRECTION	1		PLACE 1000' PRIOR TO BEGINNING OF CONSTRUCTION LIMITS. ONLY USED ON -Y- LINES IF RESURFACING LIMITS EXTEND 1000' ALONG -Y- LINE.	<p>NO REQUIRED STATIONARY SIGNING FOR THE FOLLOWING -Y- LINE CONDITIONS:</p> <ol style="list-style-type: none"> 1) LESS THAN 1000' OF RESURFACING ALONG -Y- LINE 2) SUBDIVISION ROADS 3) DEAD END ROADS <p>WHEN PAVING/CONSTRUCTION ACTIVITIES PROCEED ACROSS AN UNSIGNED -Y- LINE, PORTABLE ADVANCE WARNING SIGNS SHALL BE USED ALONG THE -Y- LINE AS SHOWN BELOW. REMOVE UPON COMPLETION OF WORK.</p> <div style="display: flex; justify-content: space-around;"> <div style="text-align: center;"> PLACED 500' IN ADVANCE OF FLAGGER. </div> <div style="text-align: center;"> PLACED 250' IN ADVANCE OF FLAGGER. </div> </div>
	2		#2 SIGN ONLY USED WHEN CONSTRUCTION LIMITS ARE 2 OR MORE MILES IN LENGTH. ROUND UP TO NEXT WHOLE NUMBER. (NO FRACTIONAL OR DECIMAL NUMBERS)	
	3		- PLACE INITIALLY AT THE CONSTRUCTION LIMITS AND SPACE 1 MILE APART THEREAFTER. - AT TEE INTERSECTIONS INSTALL INITIALLY 1/2 MILE FROM INTERSECTION AND SPACE 1 MILE APART THEREAFTER.	
	4		- THESE ARE FOR -Y- LINES THAT ARE "THROUGH" ROADWAYS. - DEAD END AND SUBDIVISION ROADS ARE NOT "THROUGH" ROADWAYS. - INSTALL 500' +/- FROM EACH -Y- LINE APPROACH AS SHOWN ABOVE. - FOR MULTIPLE -Y- LINES THAT ARE SEPARATED BY 0.25 MILES OR LESS, TREAT AS A SINGLE UNIT AND INSTALL WITHIN 500' OF EACH APPROACH. - A MAXIMUM OF 2 SIGN SETS PER MILE. DO NOT INSTALL WHEN -Y- LINES ARE WITHIN 0.5 MILES FROM "END ROAD WORK" SIGN. - FOR TEE INTERSECTIONS, INSTALL WITHIN 500' +/- OF THE INTERSECTION ALONG -L- LINE.	
	5		PLACE 500' FOLLOWING THE END OF CONSTRUCTION LIMITS OR AS SHOWN WHEN WORK ENDS AT A 3-WAY TEE INTERSECTION.	

THE ABOVE SIGNS ARE ALL THAT ARE REQUIRED FOR A CONTRACTOR TO BEGIN A RESURFACING CONTRACT. ANY ADDITIONAL SIGNS REQUESTED BY NCDOT DIVISIONS SHALL BE INSTALLED WITHIN 7 BUSINESS DAYS OF THE START OF CONTRACT WORK.

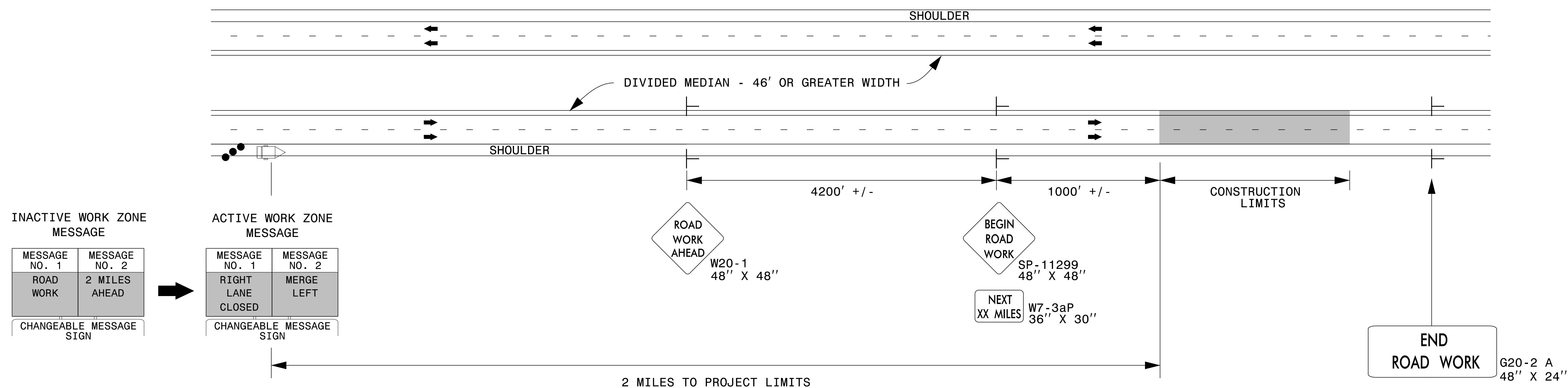
MAPS LESS THAN 2 MILES

FOR RESURFACING MAPS WITH CONSTRUCTION LIMITS LESS THAN 2 MILES IN LENGTH, NO STATIONARY SIGNS ARE REQUIRED. USE PORTABLE "ROAD UNDER CONSTRUCTION" OR "ROAD WORK AHEAD" SIGNS IN LIEU OF STATIONARY ADVANCE WARNINGS SIGNS.

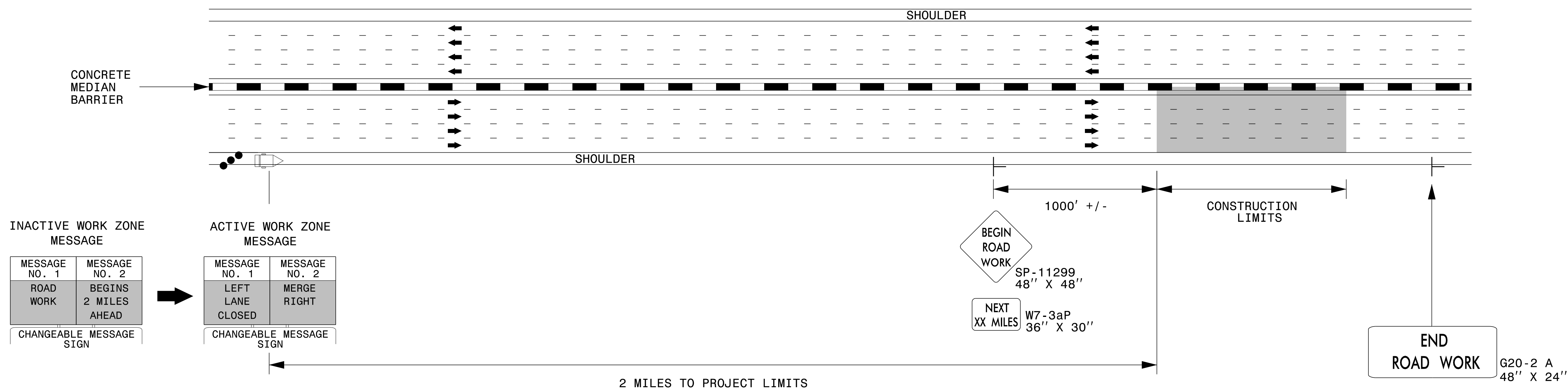


ADVANCE WARNING SIGNS FOR RURAL AND SUBURBAN 2-LANE ROADWAY RESURFACING

DIVIDED MEDIANS WITH WIDTHS 46' OR GREATER



DIVIDED MEDIANS WITH WIDTHS LESS THAN 46' OR WITH PERMANENT MEDIAN BARRIER



NOTES:

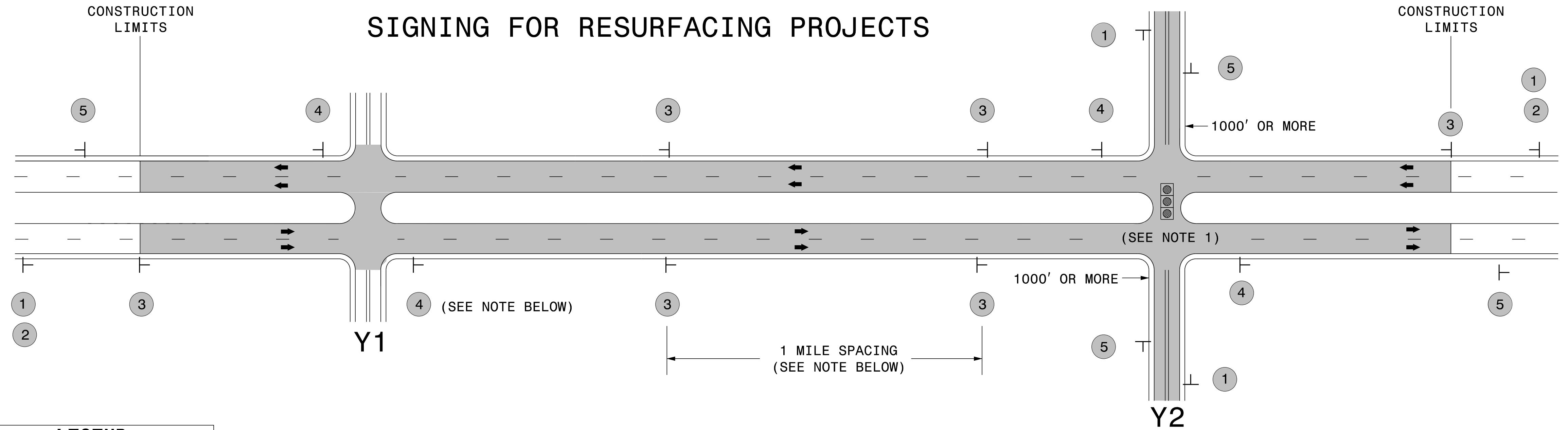
- 1) LATERAL CLEARANCE AT ALL SIGN LOCATIONS SHALL BE 6' AS MEASURED FROM THE EDGE OF PAVEMENT.
- 2) MOUNT SIGNS THAT ARE LARGER THAN 10 SQUARE FEET IN AREA ON TWO OR MORE WOOD OR U-CHANNEL SUPPORTS. PERFORATED SQUARE TUBING SUPPORT SYSTEMS MAY SUPPORT LARGER AREAS ON A SINGLE SUPPORT. FOLLOW MANUFACTURER'S RECOMMENDATIONS. THESE SYSTEMS SHALL BE NCHRP 350 COMPLIANT AND NCDOT APPROVED.
- 3) FOR MEDIAN WIDTHS LESS THAN 46' (MEASURED EDGELINE TO EDGELINE) USE THE BOTTOM DRAWING.
- 4) IF STATIONARY GENERAL WARNING SIGNS ARE USED, THEY WILL BE PAID FOR PER SECTION 104 OF THE NCDOT STANDARD SPECIFICATIONS AS EXTRA WORK.
- 5) INSTALL "ROAD WORK AHEAD" (W20-1) ALONG ENTRANCE RAMP 500' PRIOR TO RAMP TERMINAL, AND "END ROAD WORK" (G20-2a) AT THE END OF EXIT RAMP WITHIN THE WORK ZONE.
- 6) IF MILLED AREAS ARE NOT PAVED BACK BY THE END OF THE WORK DAY, PORTABLE SIGNS SHALL BE USED TO WARN DRIVERS OF THE PRESENT CONDITIONS. THESE ARE TO INCLUDE, BUT NOT LIMITED TO "ROUGH ROAD" W8-8, "UNEVEN LANES" W8-11, "GROOVED PAVEMENT" W8-15 w/MOTORCYCLE PLAQUE MOUNTED BELOW. THESE ARE TO BE DOUBLE INDICATED ON MULTI-LANE ROADWAYS WITH SPEED LIMITS 45 MPH AND GREATER AND WITH DIVIDED MEDIANS OF 46' OR GREATER. THESE PORTABLE SIGNS ARE INCIDENTAL TO THE OTHER ITEMS OF WORK INCLUDED IN THE TEMPORARY TRAFFIC CONTROL (LUMP SUM) PAY ITEM.

LEGEND

- CHANGEABLE MESSAGE SIGN (CMS)
- STATIONARY SIGN
- DIRECTION OF TRAFFIC FLOW
- TRAFFIC DRUM



**RESURFACING ADVANCE
WARNING SIGNS FOR
HIGH SPEED FACILITIES
≥ 60 MPH**



LEGEND
 ┆ STATIONARY SIGN
 ← DIRECTION OF TRAFFIC FLOW

MAINLINE (-L-) SIGNING

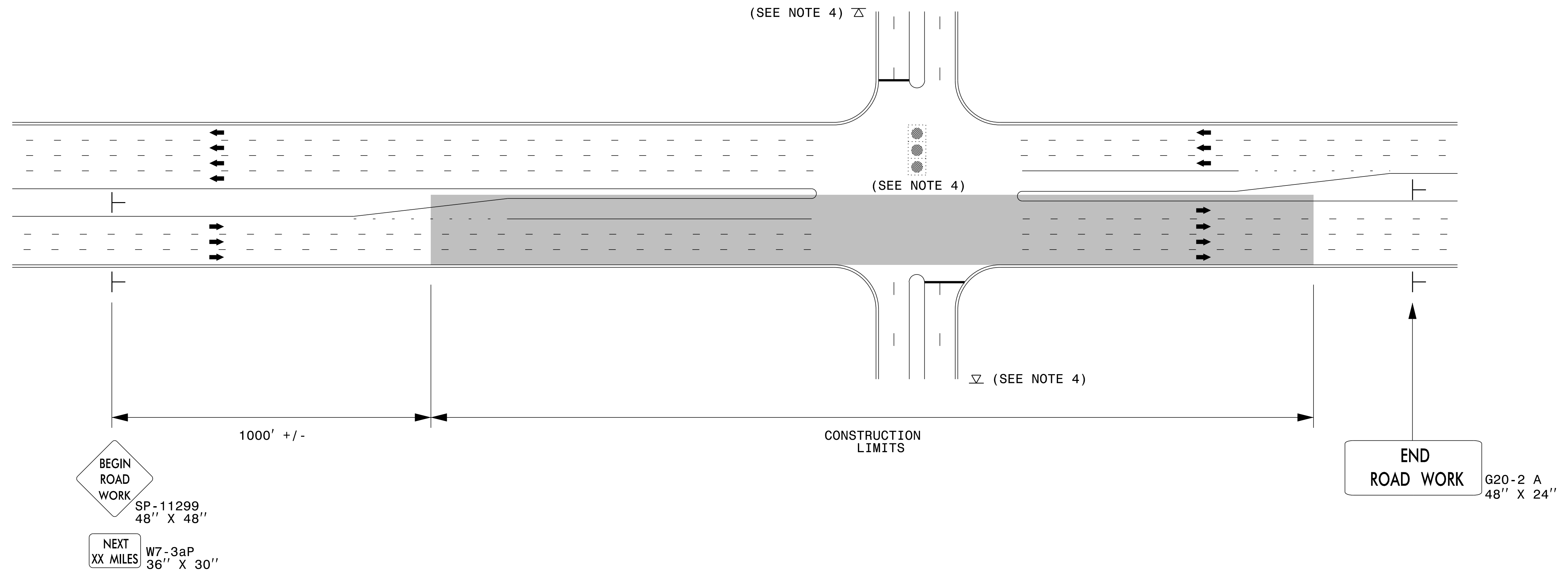
-Y- LINE SIGNING

SIGNING NOTES AND PLACEMENT PER DIRECTION	 	<p>PLACE 1000' PRIOR TO BEGINNING OF CONSTRUCTION LIMITS. ONLY USED ON -Y- LINES IF RESURFACING LIMITS EXTEND 1000' ALONG -Y- LINE.</p> <p>#2 SIGN ONLY USED WHEN RESURFACING LIMITS ARE 2 OR MORE MILES IN LENGTH. ROUND UP TO NEXT WHOLE NUMBER. (NO FRACTIONAL OR DECIMAL NUMBERS)</p>	<p>NO REQUIRED STATIONARY SIGNING FOR THE FOLLOWING -Y- LINE CONDITIONS:</p> <ol style="list-style-type: none"> 1) LESS THAN 1000' OF RESURFACING ALONG -Y- LINE 2) SUBDIVISION ROADS 3) DEAD END ROADS <p>WHEN PAVING/CONSTRUCTION ACTIVITIES PROCEED ACROSS AN UNSIGNED -Y- LINE, ADVANCE WARNING PORTABLE SIGNS SHALL BE USED ALONG THE -Y- LINE AS SHOWN BELOW. REMOVE UPON COMPLETION OF WORK.</p> <div style="display: flex; justify-content: space-around;"> <div style="text-align: center;"> <small>W20-1 48" X 48"</small> </div> <div style="text-align: center;"> <small>W20-7 A 48" X 48"</small> </div> </div> <p>PLACED 500' IN ADVANCE OF FLAGGER. PLACED 250' IN ADVANCE OF FLAGGER.</p> <p>NOTES:</p> <ol style="list-style-type: none"> 1) MAY USE LAW ENFORCEMENT TO CONTROL TRAFFIC AT SIGNALIZED INTERSECTIONS AS DIRECTED BY THE ENGINEER. PROVIDE PORTABLE "ROAD WORK AHEAD" (W20-1) SIGNS 500' IN ADVANCE ALONG BOTH APPROACHES FROM THE SIDE STREETS WHEN PAVING PROCEEDS THROUGH THE INTERSECTION.
		<p>PLACE INITIALLY AT THE CONSTRUCTION LIMITS AND SPACED 1 MILE APART THEREAFTER. IF NO -Y- LINES EXIST, PLACE 2ND SET 1/2 MILE FROM THE CONSTRUCTION LIMITS AND THEN SPACE 1 MILE THEREAFTER.</p>	
		<p>THESE ARE FOR -Y- LINES THAT ARE "THROUGH" ROADWAYS. DEAD END AND SUBDIVISION ROADS ARE NOT "THROUGH" ROADWAYS. INSTALL 500' +/- FROM EACH -Y- LINE APPROACH AS SHOWN ABOVE. FOR MULTIPLE -Y- LINES THAT ARE SEPARATED BY 0.25 MILES OR LESS, TREAT AS A SINGLE UNIT AND INSTALL WITHIN 500' OF EACH APPROACH. A MAXIMUM OF 2 SIGN SETS PER MILE. DO NOT INSTALL WHEN -Y- LINES ARE WITHIN 0.5 MILES FROM "END ROAD WORK" SIGN.</p>	
		<p>PLACE 500' FOLLOWING THE END OF CONSTRUCTION LIMITS.</p>	

3/23/2015
 C:\Users\rmgarrrett\Downloads\Resurfacing_AdvWarn_Ltr-Su_Shldr.dgn
 User:rmgarrrett

**RESURFACING
 ADVANCE WARNING SIGNS
 FOR RURAL AND SUBURBAN
 MULTI-LANE ROADWAYS
 W/ SHOULDER SECTIONS**

URBAN / SUBURBAN WORKZONES

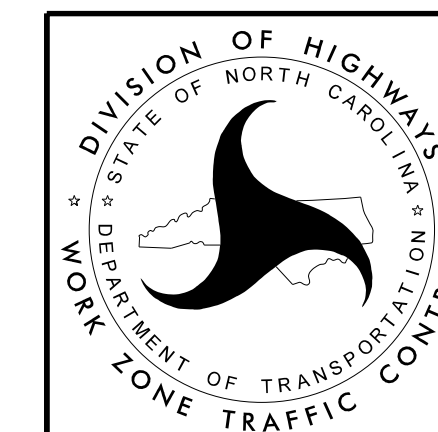


NOTES:

- 1) 48" x 48" SIZED SIGNS (SP- 11299) MAY BE REDUCED TO 36" X 36" ON ROADWAYS WITH SPEED LIMITS OF 40 MPH OR LESS.
- 2) MOUNT SIGNS THAT ARE LARGER THAN 10 SQUARE FEET IN AREA ON TWO OR MORE WOOD OR U-CHANNEL SUPPORTS. PERFORATED SQUARE TUBING SUPPORT SYSTEMS MAY SUPPORT LARGER AREAS ON A SINGLE SUPPORT. FOLLOW MANUFACTURER'S RECOMMENDATIONS. THESE SYSTEMS SHALL BE NCHRP 350 COMPLIANT AND NCDOT APPROVED.
- 3) ADVANCE WARNING SIGNS NOT REQUIRED ON NON-SIGNALIZED SIDE STREETS.
- 4) MAY USE LAW ENFORCEMENT TO CONTROL TRAFFIC AT SIGNALIZED INTERSECTIONS AS DIRECTED BY THE ENGINEER. PROVIDE PORTABLE "ROAD WORK AHEAD" (W20-1) SIGNS 500' IN ADVANCE ALONG BOTH APPROACHES FROM THE SIDE STREETS WHEN PAVING PROCEEDS THROUGH THE INTERSECTION.
- 5) LATERAL CLEARANCE AT ALL SIGN LOCATIONS SHALL BE 2' AS MEASURED FROM THE EDGE OF PAVEMENT OR THE FACE OF THE CURB. WHEN UNABLE TO OBTAIN THE LATERAL CLEARANCE WITHIN THE MEDIAN AREA USE SHOULDER MOUNTS ONLY.
- 6) SIGN MOUNT LOCATIONS SHALL NOT BLOCK SIDEWALKS OR DRIVEWAYS.
- 7) IF STATIONARY GENERAL WARNING SIGNS ARE USED, THEY WILL BE PAID FOR PER SECTION 104 OF THE NCDOT STANDARD SPECIFICATIONS AS EXTRA WORK.
- 8) IF MILLED AREAS ARE NOT PAVED BACK BY THE END OF THE WORK DAY, PORTABLE SIGNS SHALL BE USED TO WARN DRIVERS OF THE PRESENT CONDITIONS. THESE ARE TO INCLUDE, BUT NOT LIMITED TO "ROUGH ROAD" W8-8, "UNEVEN LANES" W8-11, "GROOVED PAVEMENT" W8-15 w/MOTORCYCLE PLAQUE MOUNTED BELOW. THESE ARE TO BE DOUBLE INDICATED ON MULTI-LANE ROADWAYS WITH SPEED LIMITS 45 MPH AND GREATER WHERE LATERAL CLEARANCE CAN BE OBTAINED WITHIN THE MEDIAN AREAS. THESE PORTABLE SIGNS ARE INCIDENTAL TO THE OTHER ITEMS OF WORK INCLUDED IN THE TEMPORARY TRAFFIC CONTROL (LUMP SUM) PAY ITEM.

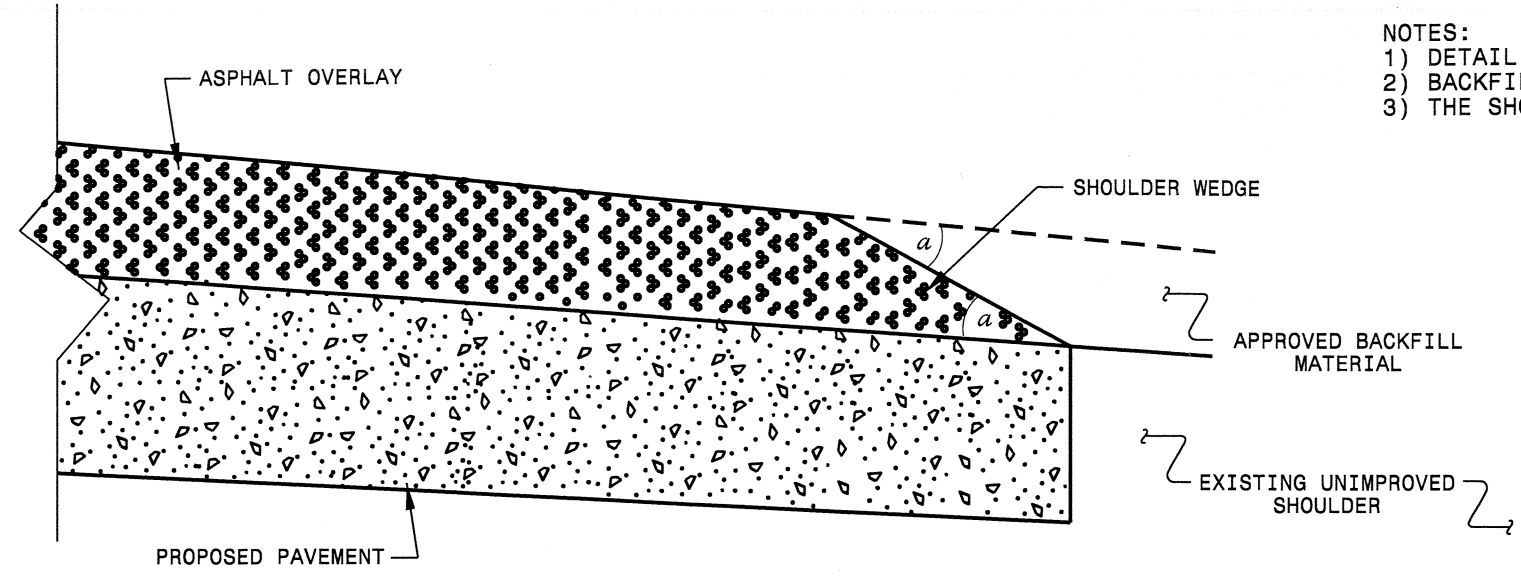
LEGEND

- ├ STATIONARY SIGN
- ➔ DIRECTION OF TRAFFIC FLOW

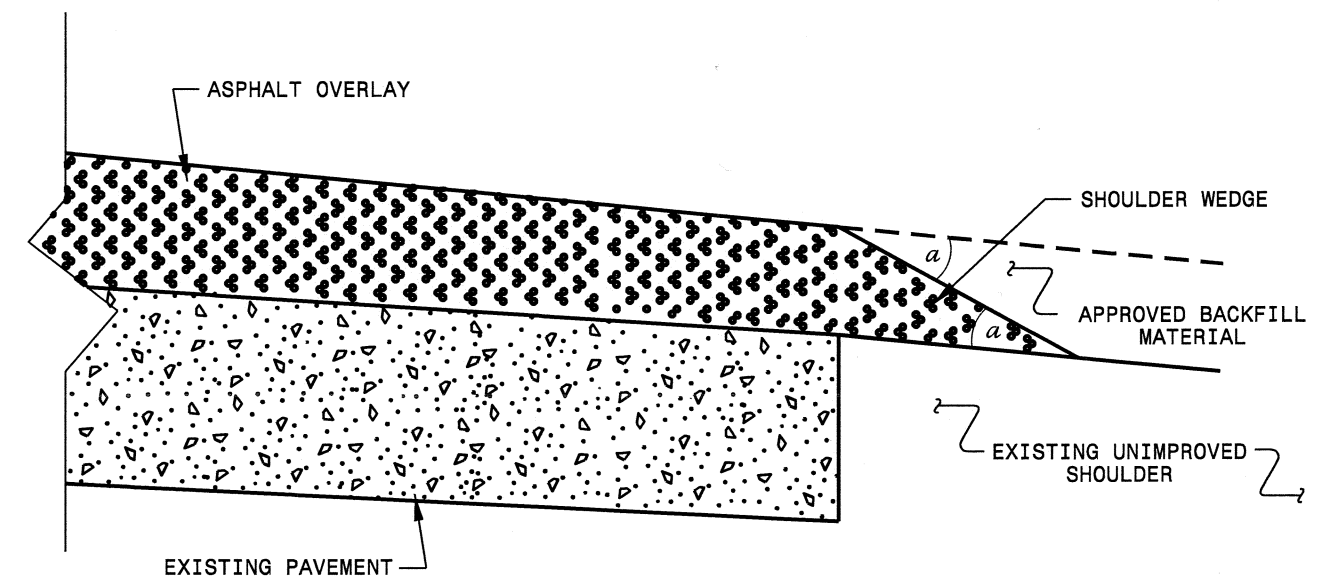


**RESURFACING ADVANCE
WARNING SIGNS FOR
URBAN / SUBURBAN
FACILITIES**

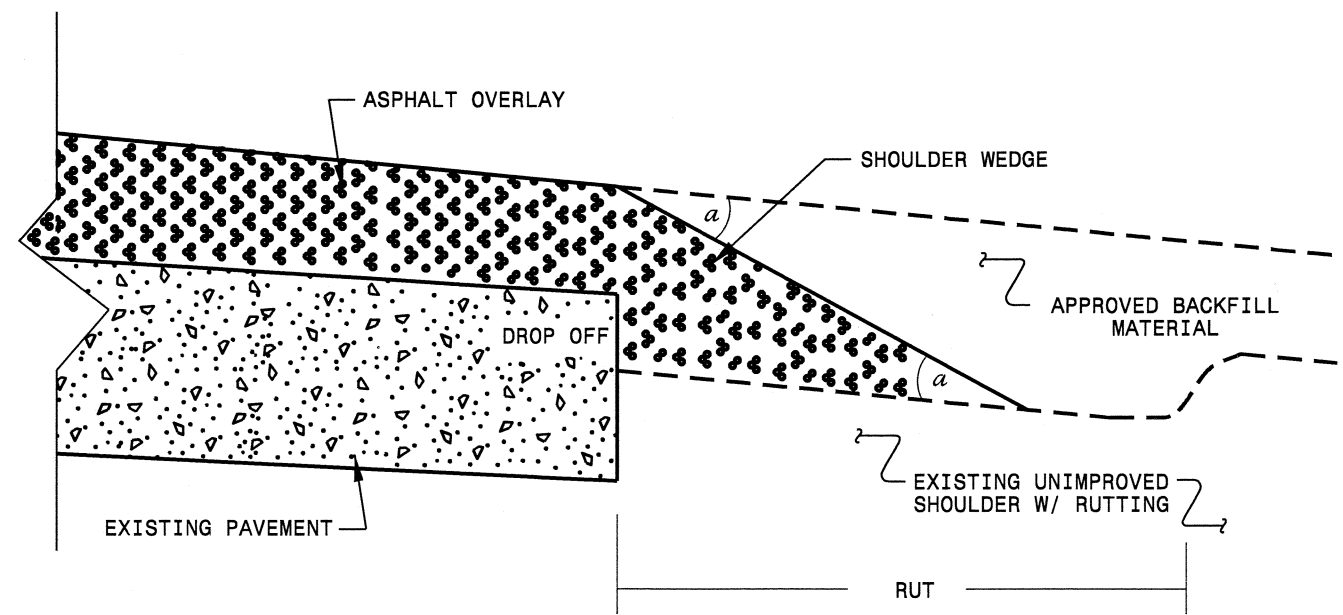
- NOTES:
 1) DETAIL DOES NOT APPLY TO OGAFB AND ULTRA-THIN BONDED WEARING COURSE.
 2) BACKFILL SHOULDER WITH APPROVED MATERIAL.
 3) THE SHOULDER WEDGE DEVICE MAY BE DISENGAGED AT PAVED DRIVEWAYS AND SIDE STREETS.



SHOULDER WEDGE DETAIL
 (Resurfacing Projects w/ Widening or
 with Existing Paved Shoulder having no dropoffs)



SHOULDER WEDGE DETAIL
 (Resurfacing Projects w/ NO Widening)



SHOULDER WEDGE DETAIL
 (Resurfacing Adjacent to
 Rutted Shoulder)

- SHOULDER WEDGE ANGLE = 30°

CONTRACT STANDARDS AND DEVELOPMENT UNIT	
Office 919-707-6950 FAX 919-250-4119	
SHOULDER WEDGE DETAILS	
ORIGINAL BY: T.SPELL	DATE: 7-19-11
MODIFIED BY:	DATE: 10/18/12
CHECKED BY:	DATE:
FILE SPEC.: s:\user\detailed\stand\shoulderwedgedetail.dgn	

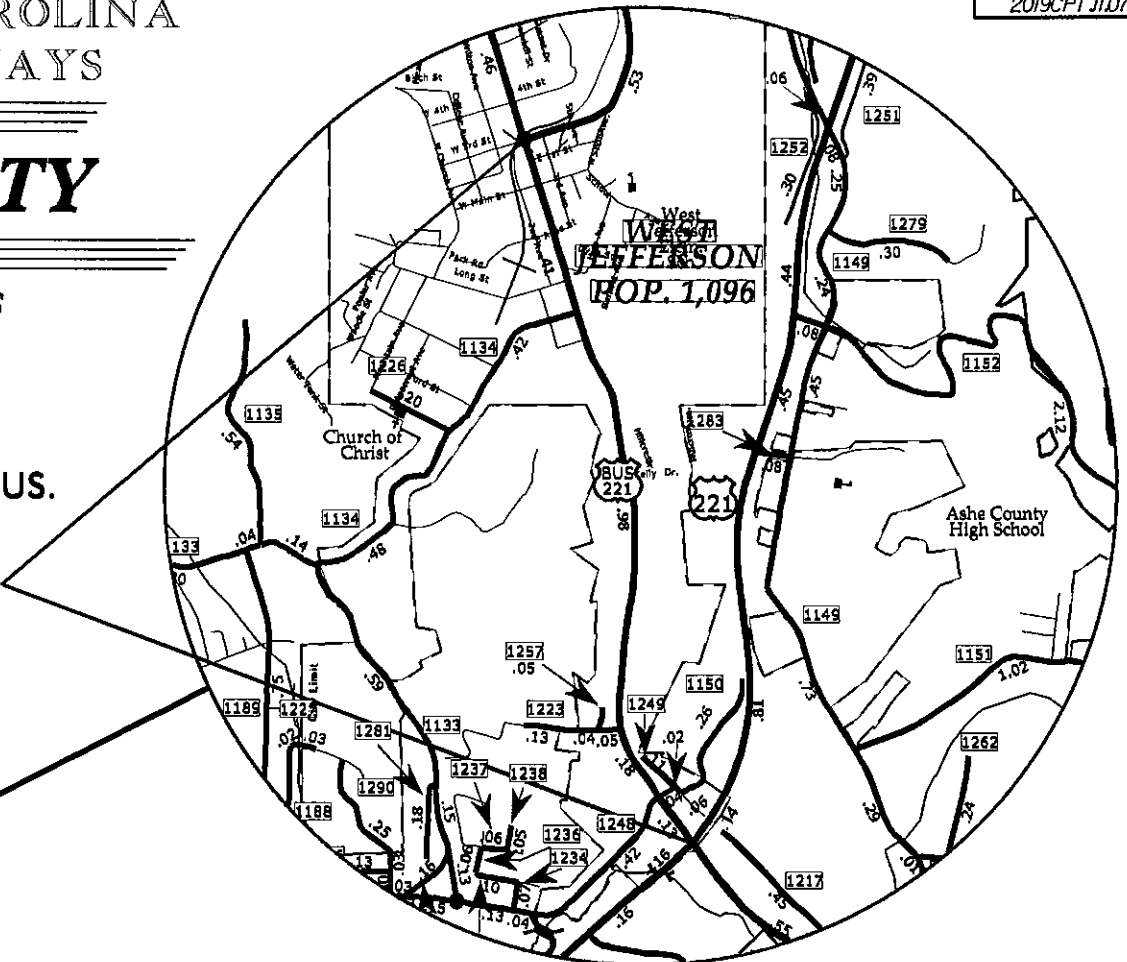
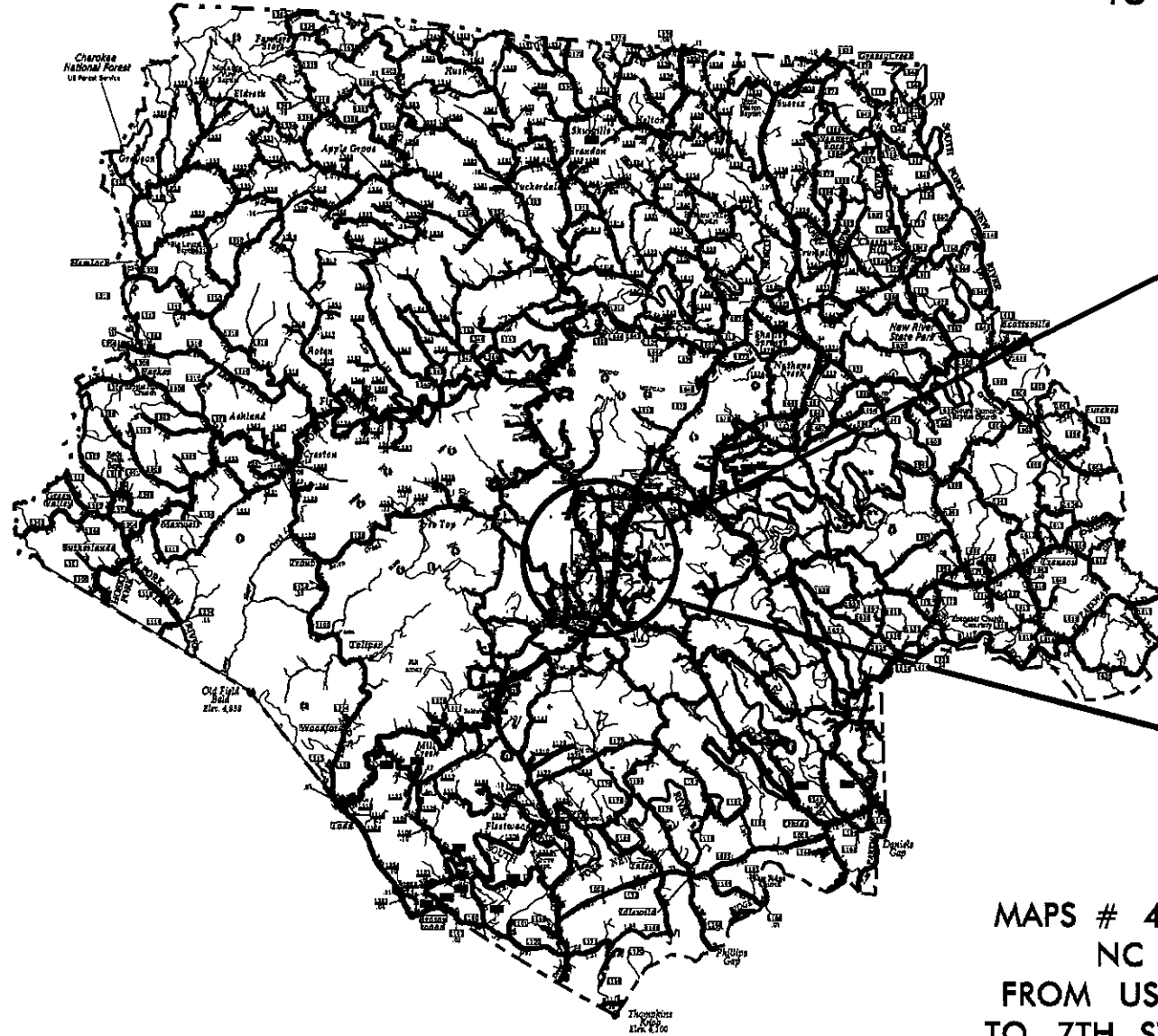
SYSTEMS CONSULTANTS
 11/18/12

STATE OF NORTH CAROLINA
DIVISION OF HIGHWAYS

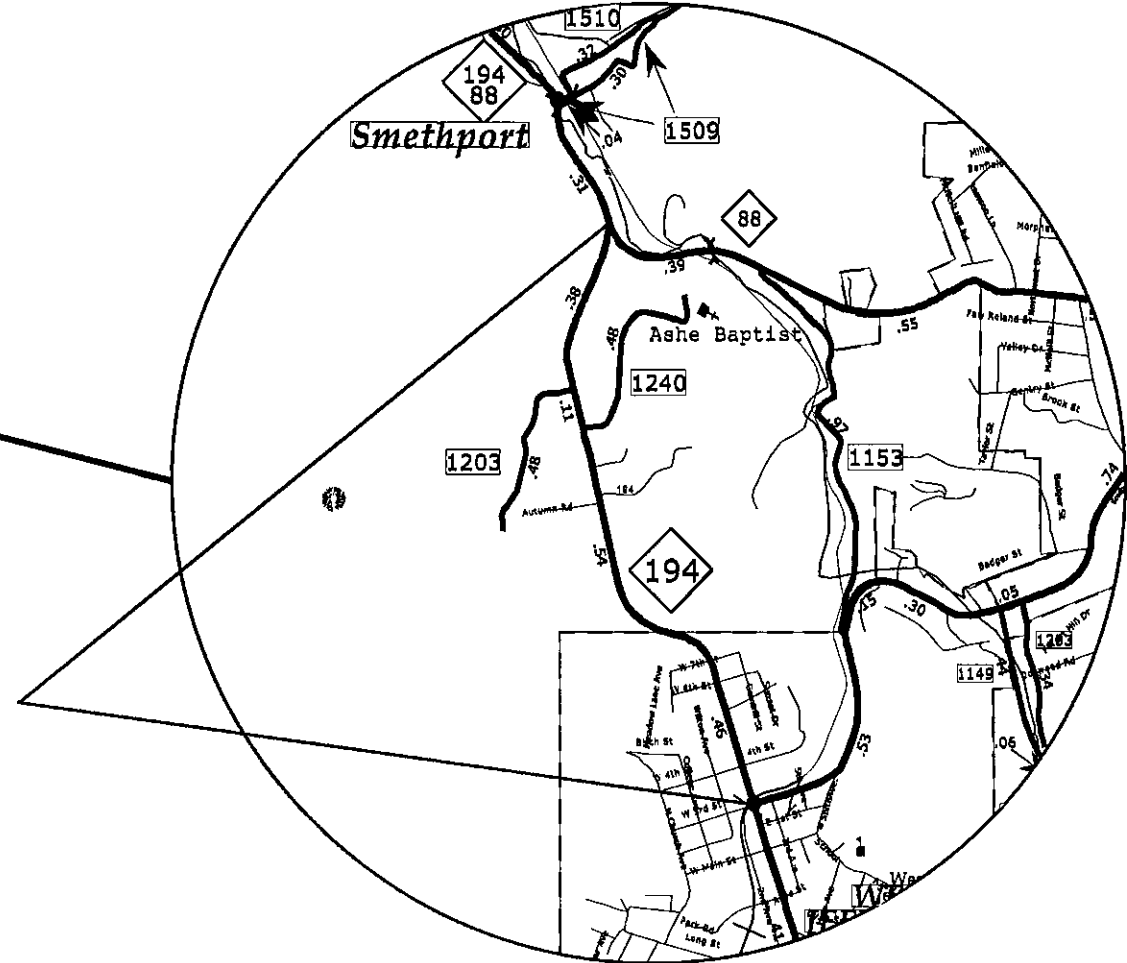
ASHE COUNTY

2019 RESURFACING MAPS

MAP # 1 US 221 BUS.
FROM US 221
TO US 194



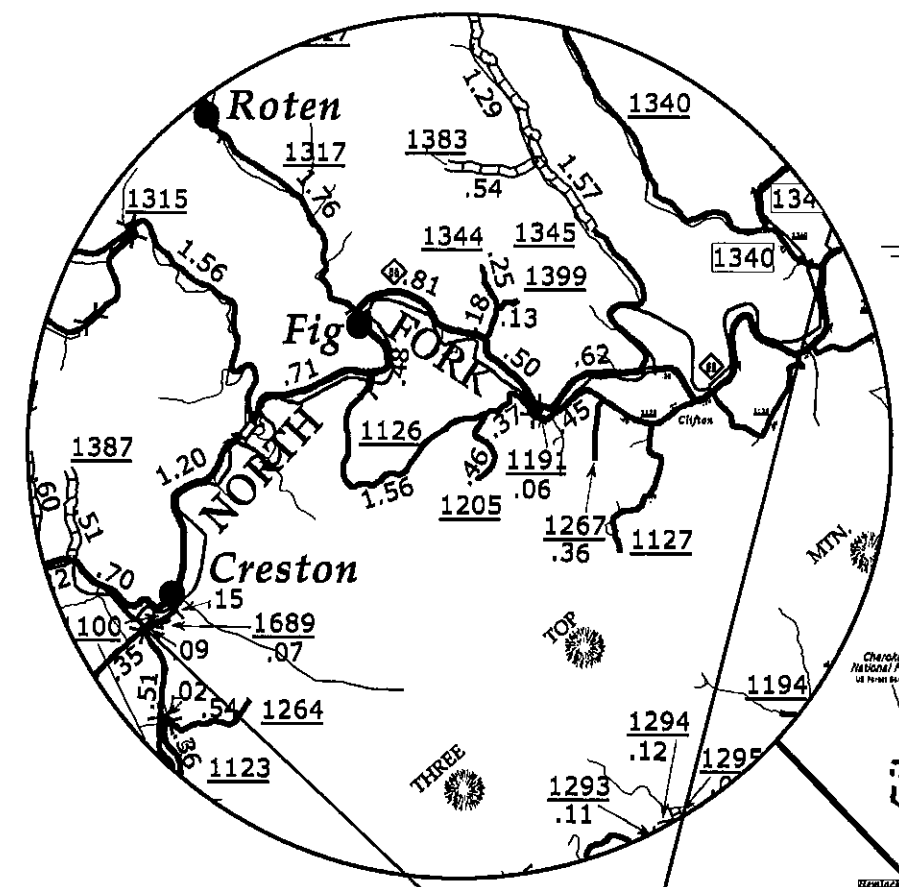
MAPS # 4 AND #5
NC 194
FROM US 221 BUS.
TO 7TH STREET AND
FROM 7TH STREET
TO NC 88



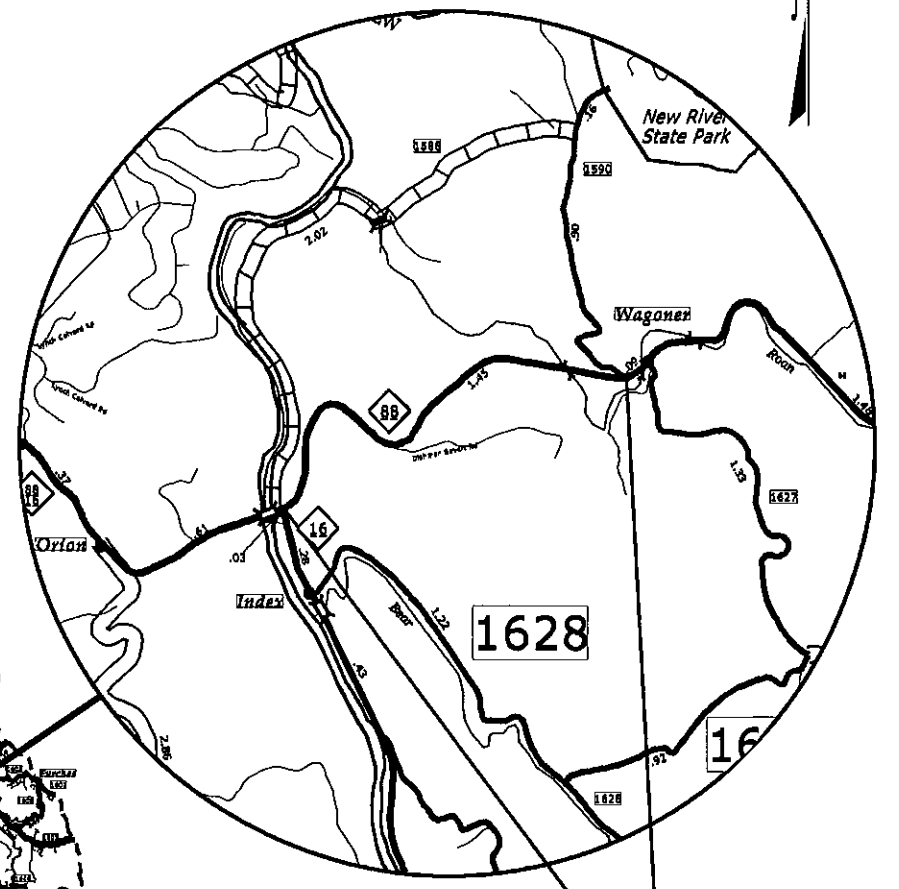
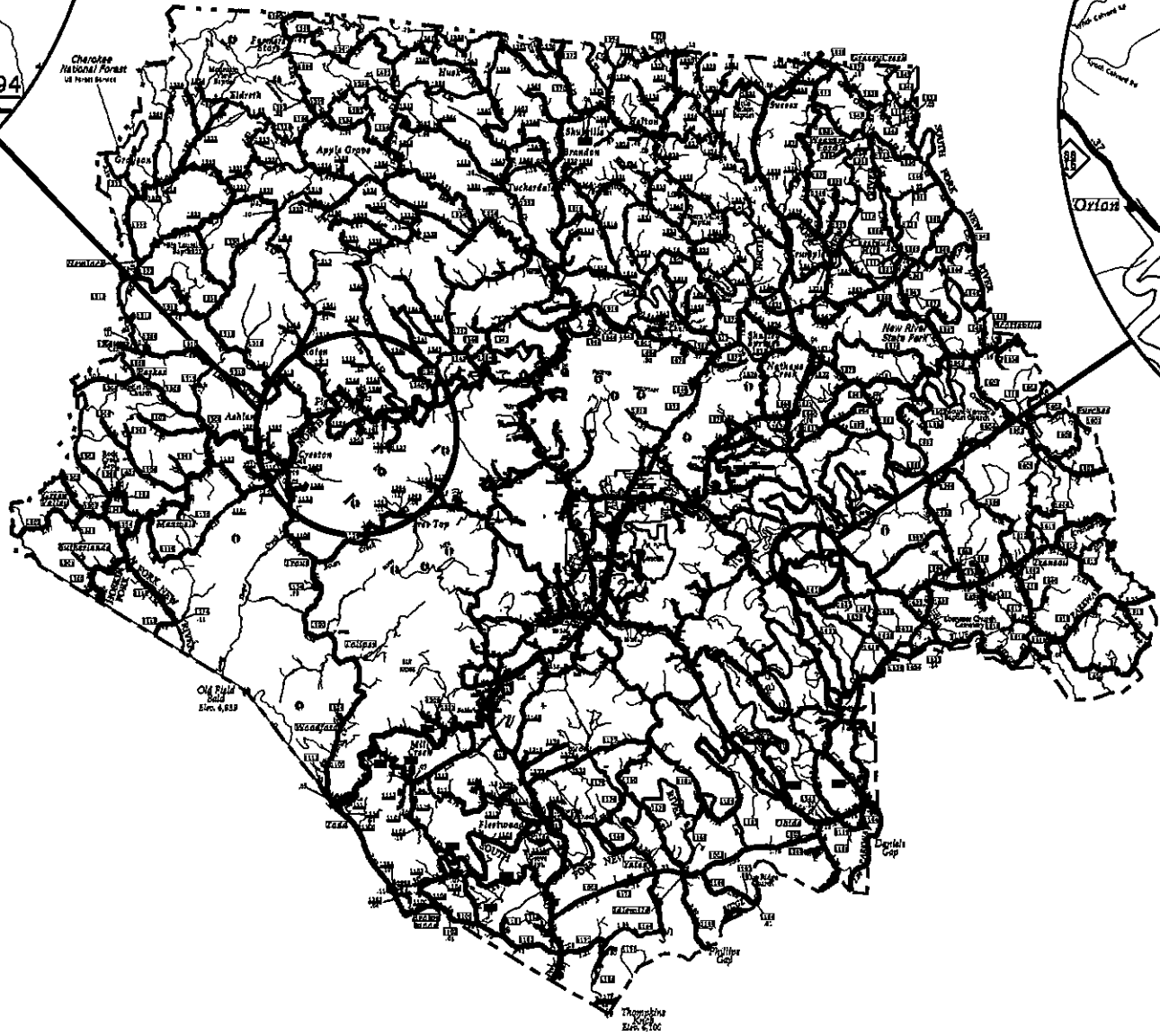
STATE OF NORTH CAROLINA
DIVISION OF HIGHWAYS

ASHE COUNTY

2019 RESURFACING MAPS



MAP # 2 NC 88
FROM SR 1387
(DR. ROBINSON RD.)
TO SR 1340
(WEST MILL CREEK RD.)



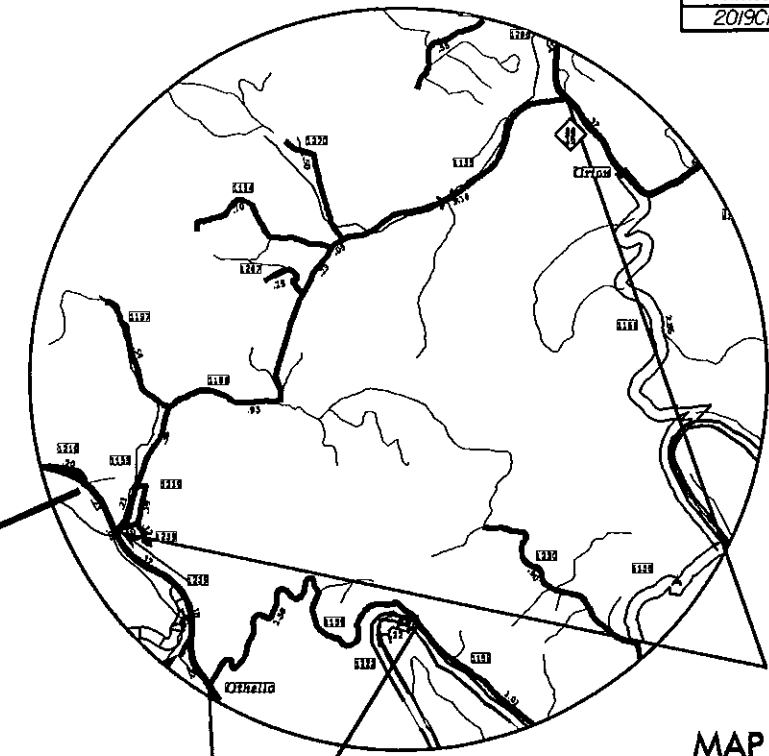
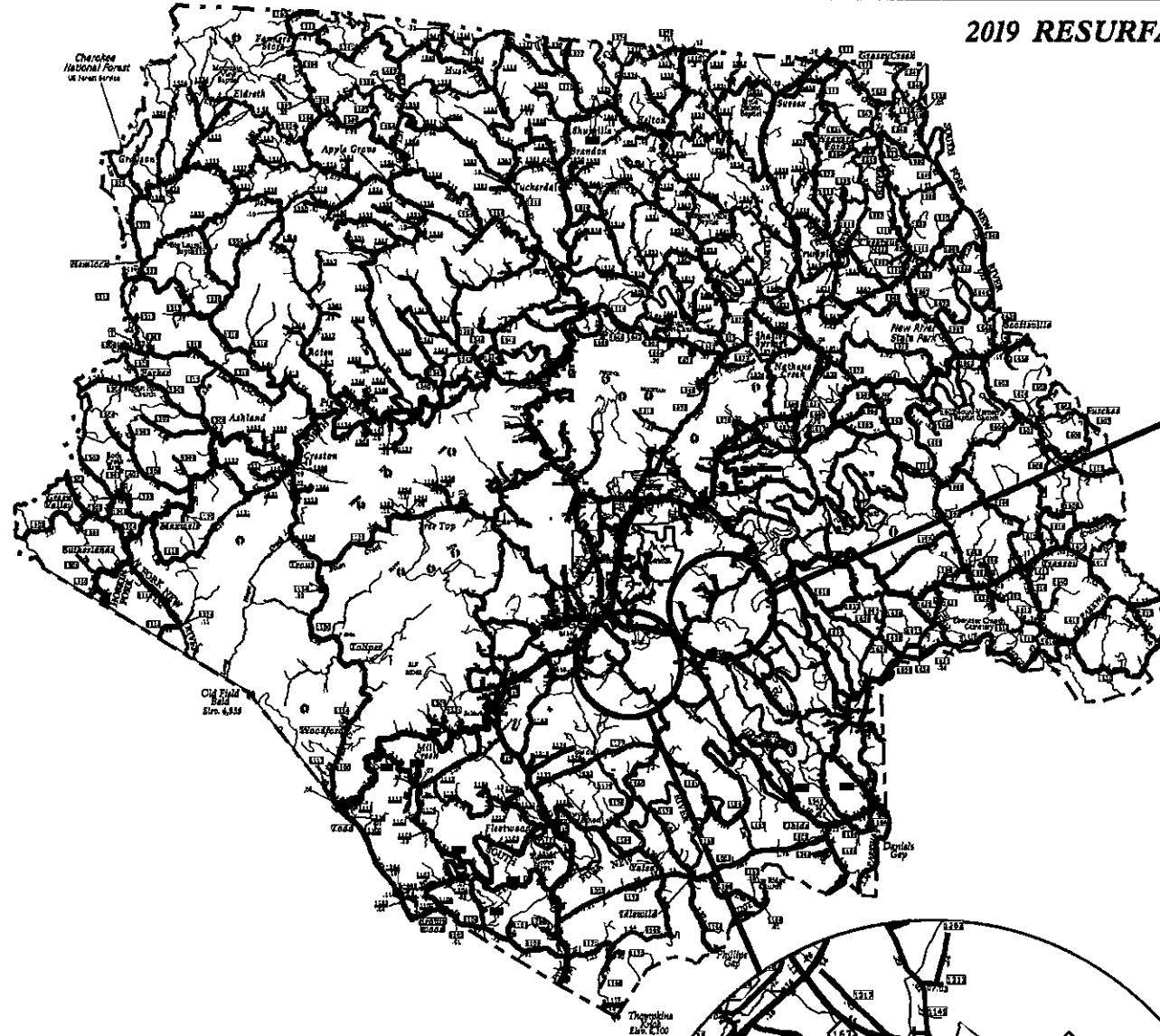
MAP # 3 NC 88
FROM NC 16
TO SR 1590
(WAGONER ACCESS RD.)



STATE OF NORTH CAROLINA
DIVISION OF HIGHWAYS

ASHE COUNTY

2019 RESURFACING MAPS

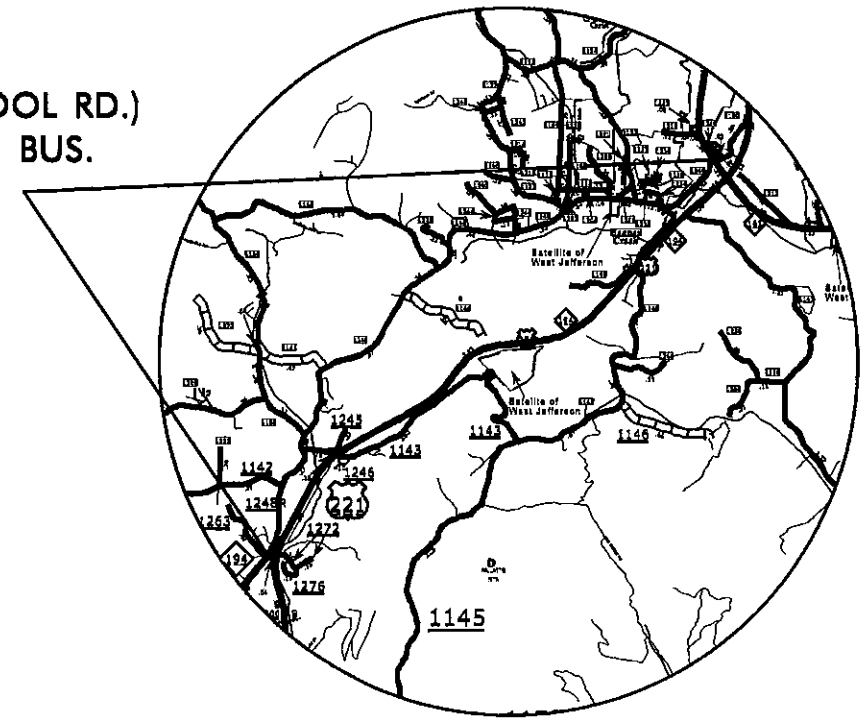
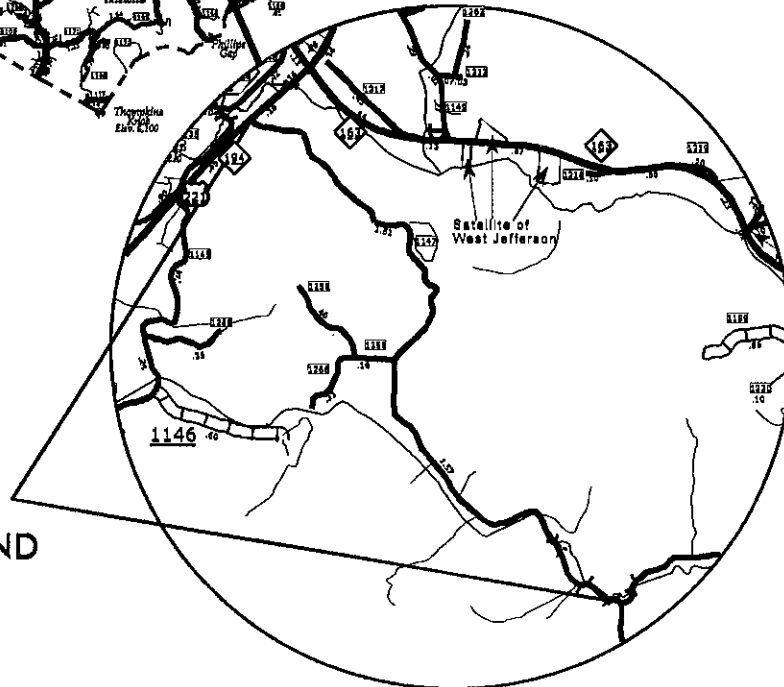


MAP #11
SR 1155 (FRANK DILLARD RD.)
FROM NC 16 TO NC 163

MAP #12
SR 1159 (BOGGS RD.)
FROM NC 163 TO 20' PVMT.

MAP #20
SR 1248 (BEAVER CREEK SCHOOL RD.)
FROM NC 194 TO US 221 BUS.

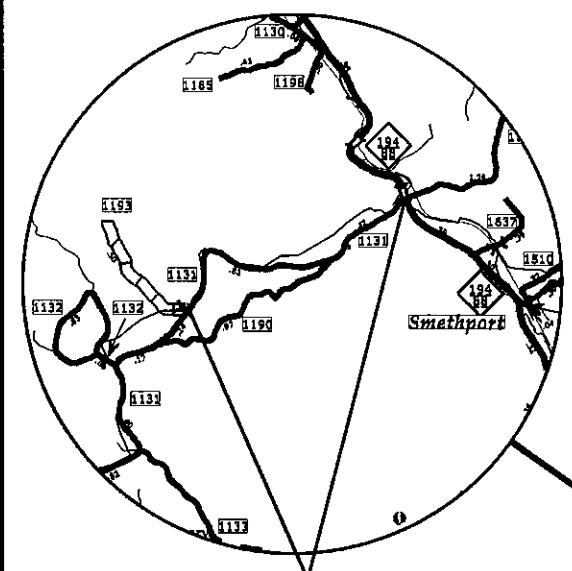
MAPS #9 AND #10
SR 1147 (NETTLE KNOB RD.)
FROM SR 1181
(LOWER NETTLE KNOB RD.)
TO SR 1258 (CHERRY AVE.) AND
FROM SR 1258 TO US 221



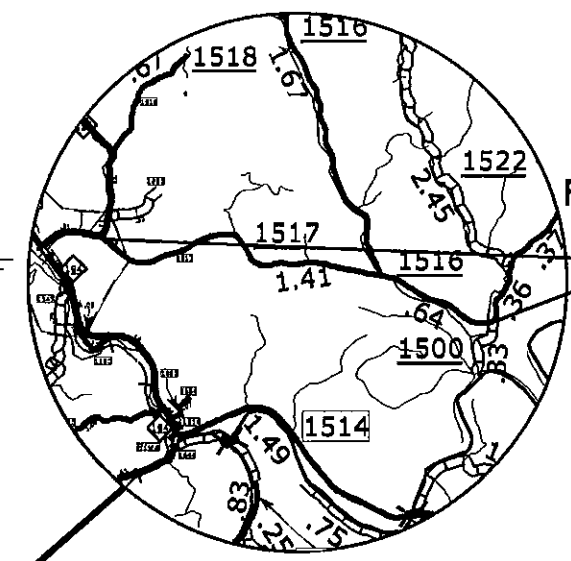
STATE OF NORTH CAROLINA
DIVISION OF HIGHWAYS

ASHE COUNTY

2019 RESURFACING MAPS

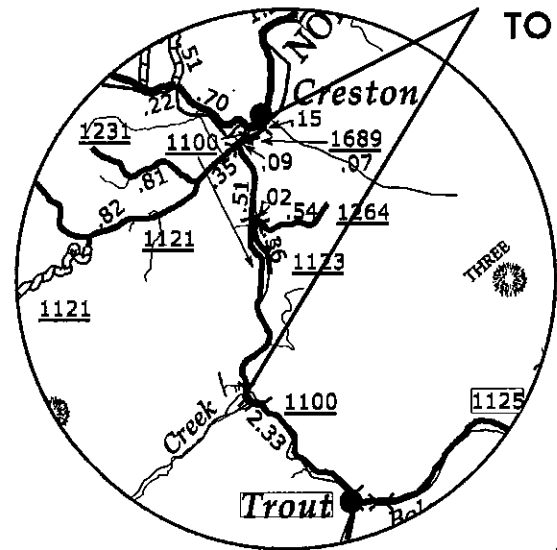


MAP # 8 SR 1131
(BUFFALO RD.)
FROM SR 1193 (LEWIS RD.)
TO NC 88

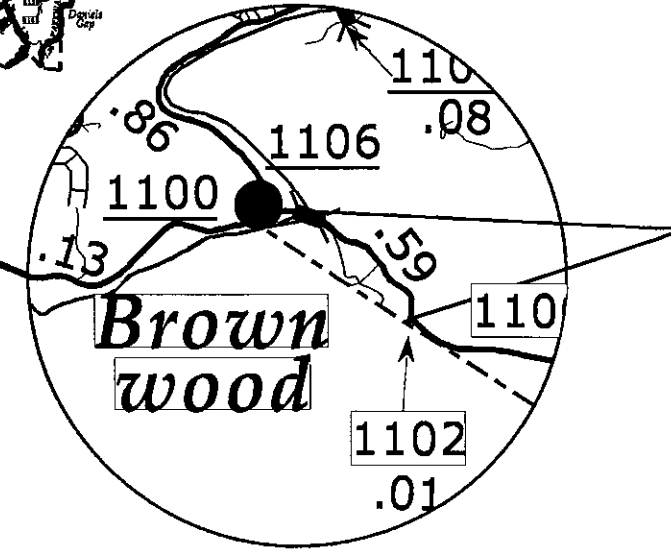
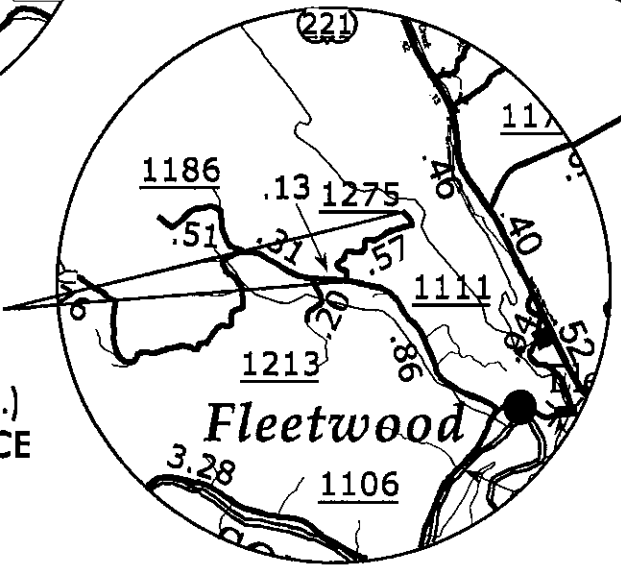


MAPS # 26 AND 27
SR 1516 AND SR 1517
(PINEY CREEK RD.)
FROM SR 1500 (BART HURLEY RD.)
TO SR 1517 (PINEY CREEK RD.)
AND FROM SR 1516
(PINEY CREEK RD.) TO NC 194

MAP # 7 SR 1100
(THREE TOP RD.)
FROM BRIDGE OVER
LONG HOPE CREEK
TO NC 88

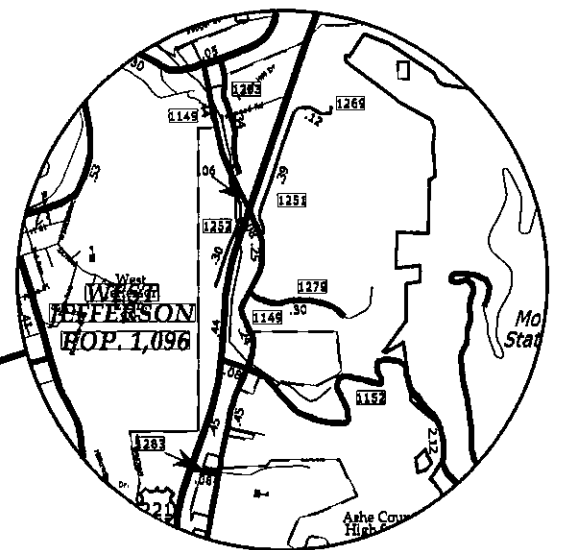


MAP # 24 SR 1275
(CALL CREEK RD.)
FROM SR 1111
(BIG FLATS CHURCH RD.)
TO END OF MAINTENANCE



MAPS # 21, 23 AND 25
SR 1251 (CANDLE LIGHT DR.),
SR 1269 (BRANDIWOOD EST.) AND
SR 1279 (VANNOY DR.)
FROM SR 1149 (MT. JEFFERSON RD.)
TO SR 1269, FROM SR 1251
TO E.O.M
AND FROM SR 1149 TO E.O.M

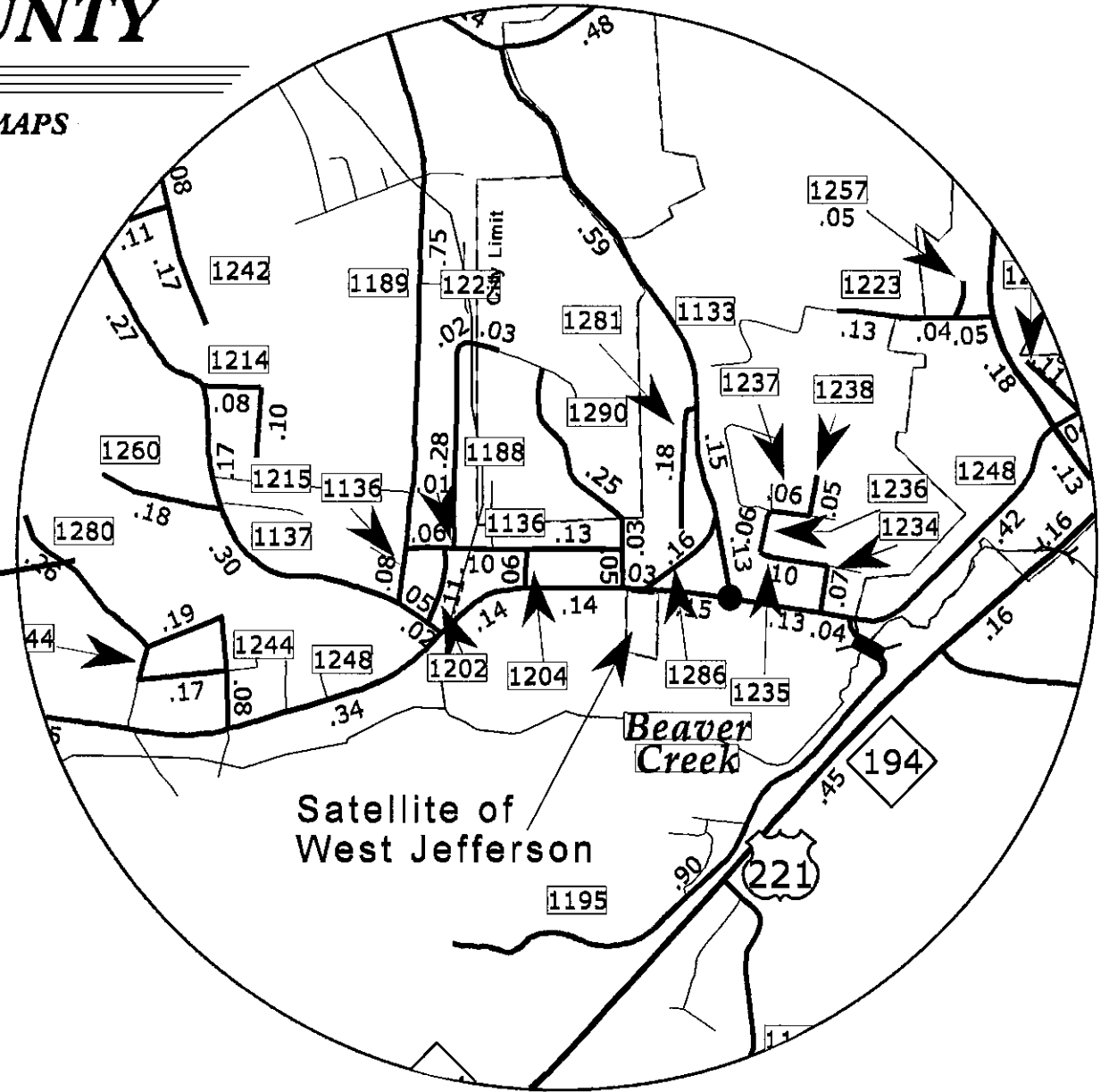
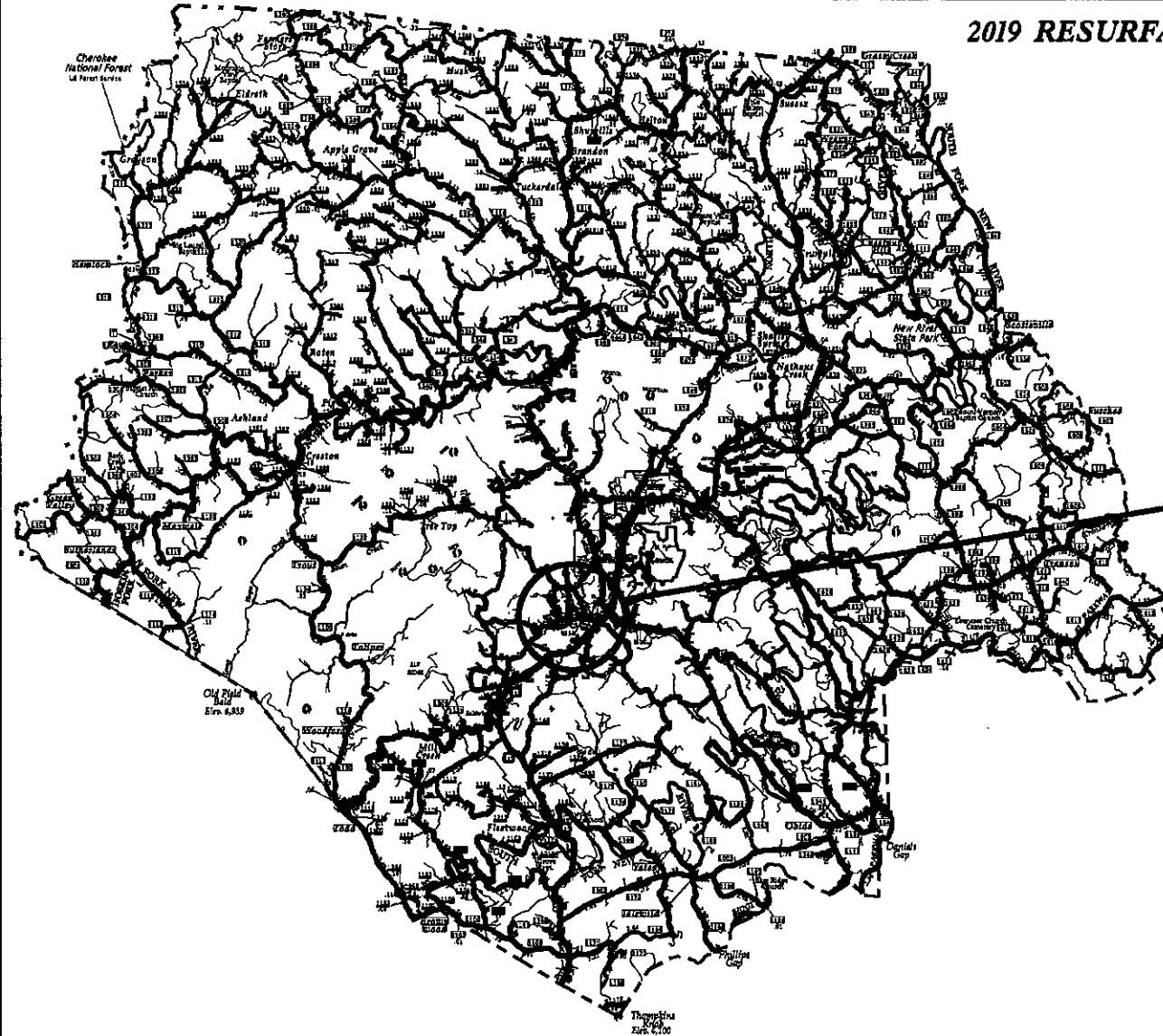
MAP # 6 SR 1100
(CRANBERRY SPRINGS RD.)
FROM SR 1102
(BROWNWOOD RD.)
TO SR 1106
(RAILROAD GRADE RD.)



STATE OF NORTH CAROLINA
DIVISION OF HIGHWAYS

ASHE COUNTY

2019 RESURFACING MAPS



- MAP # 13 SR 1214 (WEST RAINBOW RD.) FROM SR 1137 (BUCK MTN. CIRCLE) TO SR 1215 (RAINBOW RD.)
- MAP # 14 SR 1215 (RAINBOW RD.) FROM SR 1214 (WEST RAINBOW RD.) TO DEAD END
- MAP # 22 SR 1260 (JOE LYALLS RD.) FROM SR 1137 (BUCK MTN. CIRCLE) TO END OF MAINTENANCE
- MAP # 15 SR 1234 (SAINT MARYS DR.) FROM SR 1248 (BEAVER CREEK SCHOOL RD.) TO SR 1235 (ED MESSER RD.)
- MAP # 16 SR 1235 (ED MESSER RD.) FROM SR 1234 (SAINT MARYS DR.) TO SR 1236 (HARDIN LN.)
- MAP #17 SR 1236 (HARDIN LN.) FROM SR 1235 (ED MESSER RD.) TO SR 1237 (PARKER DR.)
- MAP #18 SR 1237 (PARKER DR.) FROM SR 1236 (HARDIN LN.) TO SR 1238 (JEROME ST.)
- MAP #19 SR 1238 (JEROME ST.) FROM SR 1237 (PARKER DR.) TO END OF MAINTENANCE